



Channel 17 June 2009

Public Radio and Television for South Florida
Program WebLinks, Highlights & Activities



NOVA is the highest rated science series on television and the most watched documentary series on public television. It is also one of television's most acclaimed series.



Airs: Monday, June 8, 2009,
11:00PM-12:00AM

How do you run 26.2 miles if you have trouble making it around the block? With good

coaching, discipline, and lots of group support, as NOVA shows when it follows 13 generally sedentary people through a training regimen designed to prepare them for an ultimate test of stamina and endurance. Created in cooperation with the Boston Athletic Association®, which granted NOVA unprecedented access to the 111th Boston Marathon®, and Tufts University, "Marathon Challenge" takes viewers on a unique adventure inside the human body, tracking the physiological changes that exercise can bring about.



Airs:
Thursday, June 11, 2009, 8:00PM-9:00PM
Monday, June 15, 2009, 11:00PM-12:00AM

The New Thought Police: The NSA Wants to Know How You Think—Maybe Even What You Think

by James Bamford

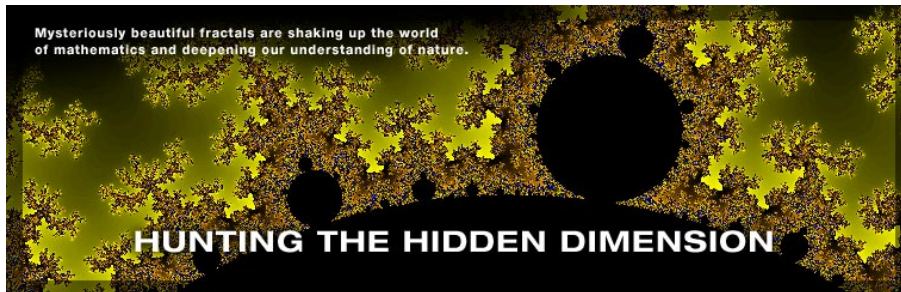
The National Security Agency (NSA) is developing a tool that George Orwell's Thought Police might have found useful: an artificial intelligence system designed to gain insight into what people are thinking.

With the entire Internet and thousands of databases for a brain, the device will be able to respond almost instantaneously to complex questions posed by intelligence analysts. As more and more data is collected—through phone calls, credit card receipts, social networks like Facebook and MySpace, GPS tracks, cell phone geolocation, Internet searches, Amazon book purchases, even E-Z Pass toll records—it may one day be possible to know not just where people are and what they are doing, but what and how they think





Channel 17 June 2009
Public Radio and Television for South Florida
Program WebLinks, Highlights & Activities



Airs:
Thursday, June 18, 2009,
8:00PM-9:00PM
Monday, June 22, 2009,
11:00PM-12:00AM

You may not know it, but fractals, like the air you breathe, are all around you. Their irregular, repeating shapes are found in cloud formations and tree limbs, in stalks of broccoli and craggy mountain ranges, even in the rhythm of the human heart. In this film, NOVA takes viewers on a fascinating quest with a group of maverick mathematicians determined to decipher the rules that govern fractal geometry.



Airs: Thursday, June 25, 2009,
8:00PM-9:00PM
Monday, June 29, 2009,
11:00PM-12:00AM

With their intelligent gaze, human-like posture, and peaceful nature, it's no wonder bonobos—one of five great apes, along with gorillas, chimpanzees, orangutans, and humans—remind us of ourselves. But while we share a common hominoid ancestor with bonobos as well as 98 percent of our DNA, this unique primate has been largely overlooked by all but a few scientists.

Teachers Resource by Title: <http://www.pbs.org/wgbh/nova/teachers/resources/title.html>





Channel 17 June 2009

Public Radio and Television for South Florida
Program WebLinks, Highlights & Activities



<http://www.pbs.org/wnet/nature/>

What Females Want And What Males Will Do

Part One: **What Females Want** | Part Two: [What Males Will Do](#)

Female jumping spiders will attack and eat anything that moves. This often includes males who may be courting them. So, if a male falls short in convincing a female that he will be a good mate, he may become lunch. This is a compelling reason for males to work hard in perfecting their courtship dances.

In the mating game, it is not always “do or die,” but the penalties can be severe, and there is no single tried and true approach when it comes to the fascinating strategy of attracting a mate. Charles Darwin called it “sexual selection.” **NATURE** is calling it **What Females Want and Males Will Do** for love — a two-part miniseries about sexual selection.

What Females Want and Males Will Do explores the evolution of sexual strategies and **what** makes certain species winners and losers in the mating game. Courtship drives evolution by controlling whose genes are passed on to the next generation, and intense competition gives rise to a wide array of dazzling displays and impressive ornamentation.

From spiders that dance and monkeys that drum in the name of love, to female geladas that seek male partners with hot, red chest patches — this program about sexual selection explores the unique behaviors and special adaptations that determine how animals pick their mates, and how these selections affect future generations. In some species, the normal rules of mating are turned on their head, such as the feisty female topi antelope champing at the bit to have sex with an aloof male or bonobo males practicing free love.

Part 1

Airs: Monday, June 15, 2009, 8:00PM-9:00PM
Thursday, June 18, 2009, 7:00PM-8:00PM
Saturday, June 20, 2009, 6:30PM-7:30PM

Part 2

Airs: Monday, June 22, 2009, 8:00PM-9:00PM
Thursday, June 25, 2009, 7:00PM-8:00PM





Victoria Falls

Airs: Monday, June 29, 2009, 8:00PM-9:00PM

Victoria Falls, the world's largest waterfall, is very tall. At 350 feet, it's as high as a 35-story building, 45 feet taller than the Statue of Liberty from pedestal to torch, and more than twice as high as Niagara Falls. More than 50 blue whales could fit between one end of the Falls and the other.

And while that towering height is impressive, its width is even more extraordinary. At 5,603 feet, it is the largest uninterrupted curtain of falling water in the world. To put that in perspective, that's one mile (5,280 feet) plus 323 more feet after that. Lined up end-to-end, more than 50 blue whales (the world's largest mammals) or, if you prefer, about four-and-a-half Empire State Buildings could fit between one end of the Falls and the other.

For Educators: <http://www.pbs.org/wnet/nature/educators.html>



Examining the lives, works, and creative processes of our most outstanding cultural artists.

<http://www.pbs.org/wnet/americanmasters/about/index.html>



MARVIN GAYE: What's Going On

Airs: Wednesday, June 17, 2009, 10:00PM-11:00PM

When Marvin Gaye died in 1984, he left behind one of the great legacies in American music. More than a superb vocalist and subtle composer, he was a visionary who expressed the tenor of his times. Both radical and romantic, a self-taught singer with a flair for autobiographical revelation, he thrived on confession and loved candor. Marvin had the unique talent of turning the listener into a confidante, of making you feel his immediate presence. His aura combined spiritual and sensual essences. In his music, the combination worked wonders; in his personal life, the two strains clashed. He succeeded in translating his contradictions into complex and beautiful music.



 GREAT PERFORMANCES

<http://www.pbs.org/wnet/gperf/>



HITMAN: David Foster

Airs: Wednesday, June 3, 2009, 8:30PM-10:30PM

Saturday, June 6, 2009, 6:00PM-8:00PM

Sunday, June 7, 2009, 9:00PM-11:00PM

“Dear friends,” 15 Grammy Award-winner David Foster calls them, “some of my favorite people in the world.” To you and me, however, they’re better known as Andrea Bocelli, Josh Groban and Michael Bublé. The gilded trio leads a parade of entertainers nurtured by the Canadian-born producer, honoring him in a gala concert recorded live in performance at Las Vegas’ Mandalay Bay Events Center. *Hitman: David Foster & Friends* features Foster himself presiding center stage at the keyboard. The evening is a virtual jukebox worth of songs written by and/or produced by him. Kenneth “Babyface” Edmonds and brother Kevon offer “I Swear;” Brian McKnight revisits Earth, Wind and Fire’s “After the Love Has Gone;” former Chicago front man Peter Cetera gets down with “Hard to Say I’m Sorry,” “You’re the Inspiration” and “Glory of Love;” while Boz Scaggs reprises “Look What You’ve Done to Me” from Urban Cowboy.



STEVIE WONDER: Live at Last

Airs: Sunday, June 7, 2009, 7:00PM-9:00PM

To mark the 50th anniversary of Motown Records, Stevie Wonder: Live at Last captures Grammy Award-winning artist Stevie Wonder in his first concert performance recorded for television Monday, June 1 at 8 p.m. (ET) on THIRTEEN’s Great Performances. Presented in 5.1 digital surround sound on PBS HD, this special telecast features the Motown master performing such chart-topping hits as Isn’t She Lovely, My Cherie Amour and Sign, Sealed, Delivered [I’m Yours].

Educators:

<http://www.pbs.org/wnet/gperf/for-educators/a-z-list-of-great-performances-lessons/450/>

Resources: <http://www.pbs.org/wnet/gperf/education/education.html>



PIONEERS OF TELEVISION

Nearly 100 stars from TV's formative years bring their stories to PBS in the revealing 4-part documentary series *Pioneers of Television*. Each episode melds compelling new HD interviews with irresistible archival clips to offer a fresh take on TV's founding celebrities.

Sitcoms Part 1

Airs: Sunday, June 21, 2009, 7:00PM-8:00PM

This episode focuses on the five key sitcoms that shaped the genre: *I Love Lucy*, *The Honeymooners*, *Make Room for Daddy*, *The Andy Griffith Show* and *The Dick Van Dyke Show*. The last remaining Honeymooner, Joyce Randolph, speaks candidly about Jackie Gleason's distinctive personality. "The two were just magic together. I don't think that Jackie would have been as great without Art," Randolph says. Similarly, Marlo Thomas offers fascinating insights about her father Danny and the genesis of his *Make Room for Daddy* sitcom: My dad used to travel so much, and my mother hated to sleep alone. So we would take turns sleeping in my mother's big huge bed. And we'd bring our toys and our things in there, and then when my dad was about to come home she'd say, 'Make room for daddy.' And we would.



Lucille Ball and Desi Arnaz were both nationally-known performers long before they headlined the most popular sitcom in history. While their personal relationship was rocky, their professional talents were a perfect fit. Andy Griffith typically avoids TV interviews, but *Pioneers of Television* producer Steve Boettcher persuaded Griffith to sit for an extended interview—the result is a rare inside look at the people and techniques that made Griffith's show work.

Late Night Part 2

Airs: Sunday, June 21, 2009, 8:00PM-9:00PM

The distinct contributions and unique personalities of Steve Allen, Jack Paar and Johnny Carson headline this episode. "Johnny always wanted you to do well," Jay Leno recalls, "you'd hear him laughing in the corner with Ed, or he'd poke Ed, or he'd hit the table. And of course, this was a cue to the audience that you were accepted."



Nebraskan Johnny Carson was a successful magician in Omaha, but in the early 1950s he took a shot at California. Within a decade he was tapped for *The Tonight Show*, but—incredibly—Carson turned it down. What happened next would forever change the face of late night television.

This episode features many of the most important figures to emerge on the late-night scene. Merv Griffin gives his last interview before passing away, and Regis Philbin offers revelations about his years as a late night sidekick to Joey Bishop. Dick Cavett and Arsenio Hall provide insight into how their shows broadened the late-night audience. For the first time, Sigourney Weaver offers personal details about her father, Pat, inventor of *Tonight* and one of the most visionary TV executives ever.



Variety Part 3

Airs: Sunday, June 21, 2009, 9:00PM-10:00PM

This episode begins with Ed Sullivan's *Toast of the Town* and Milton Berle's *Texaco Star Theater*, and progresses through *The Carol Burnett Show*, *Smothers Brothers* and *Laugh-in*, among others.

Tim Conway and Jonathan Winters tell hilarious stories about their variety show years, and Tommy Smothers reveals new details about the behind-the-scenes story of his own landmark show. Pat Boone offers a compelling first-hand account of the racist policies that made it difficult for him to book African American guests. In the same vein, Tony Orlando reveals the back-story behind his role as the first Hispanic host of a variety series.



This rare image from early 1967 shows Tommy Smothers and Carol Burnett backstage at *The Smothers Brothers Comedy Hour*. Within a year they would each be headlining top-rated variety shows. While Burnett's series would stay on for more than a decade, Smothers' would be cancelled because of his political views.

Additionally, this episode includes fresh bites from earlier interviews with Milton Berle, Red Skelton and Sid Caesar—and there's no shortage of great clips. Standouts include Andy Williams singing "Moon River" and Flip Wilson's *Geraldine*. As Arsenio Hall says, "You could not dislike Flip Wilson. There was a warmth about him. And he was brilliant the way he created characters; and the characters had lives of their own. We knew about *Geraldine's* boyfriend and how jealous he was—and those things brought that character to life."

Game Shows Part 4

Airs: Sunday, June 21, 2009, 10:00PM-11:00PM



This episode traces one of broadcasting's strongest genres, from its nascent beginnings in radio through its heyday in the late 60s.

Bob Barker talks about his earliest work, and Merv Griffin details the "eureka" moments that led to the creation of *Jeopardy* and *Wheel of Fortune*:

The family took us on these long, boring vacations that we didn't want to go on.

We'd rather stay home in the summer and play with the kids on the block. They

would take us to see the bats fly out of some caves or something. I didn't want to see that. So we would sit in the back of the car and play Hangman. And years later, I remembered it, and I thought, *I wonder if that could be a game show.*

Monty Hall recounts his compelling rags-to-riches story, and Betty White remembers her role as the first female emcee. In addition, this episode features rare backstage footage of *The Price is Right* filmed the very day Bob Barker announced his retirement. Clips for this episode are wide-ranging, and include Phyllis Diller's first TV appearance as a painfully shy contestant on Groucho Marx's *You Bet Your Life*.

Pioneers of Television features dozens of never-before-seen clips, including Johnny Carson performing in his early 20s and lost sitcom footage unseen for five decades. Entertaining and revealing, this series provides an intimate perspective on the individuals and programs that made television history.

Pioneers of Television was produced by Steven J. Boettcher and Michael J. Trinklein.





Channel 17 June 2009

Public Radio and Television for South Florida
Program WebLinks, Highlights & Activities



<http://www.aplaceofourown.org/>

Airs: Monday through Friday 6:00PM-6:30PM

Ask questions, share advice and participate in discussions about your child care needs.

Resources: <http://www.aplaceofourown.org/resource.php>

WLRN PBS PROGRAMS FOR CHILDREN

Educational Programming on Public Television and Online-- All the Time!

<http://wlrn.org/readytolearn/>



MARTHA SPEAKS

<http://pbskids.org/martha/>

Series Airs: Monday through Friday
7:30AM-8:00AM and 2:00PM- 2:30PM

A family dog gains the power of speech after the letters in some alphabet soup wind up misrouted to her brain instead of her stomach in this whimsical animated series adapted from books by Susan Meddaugh.

Parents and Teachers: <http://pbskids.org/martha/parentsteachers/index.html>

WordWorld



http://pbskids.org/wordworld/index_flash.html

Airs: Monday through Friday, 11:00AM-11:30AM

This series is a 3D animated comic adventure. WORD WORLD is a place where words come alive, words save the day and where words become a child's best friend.

Parents and Teachers: <http://pbskids.org/wordworld/parentsandteachers/index.html>

SID THE SCIENCE KID



Airs: Monday through Friday, 8:30AM-9:00AM

The Sticker Chart The series opener about an inquisitive preschooler who investigates the world around him finds Sid questioning the need for charts after he sees how far he has to go on his chore chart to receive a promised toy rocket.

Parent and Teacher Resource: <http://pbskids.org>

